

C. STOUT.
 COMBINED CLAMP AND STRETCHER.
 APPLICATION FILED JULY 16, 1908.

926,030.

Patented June 22, 1909.

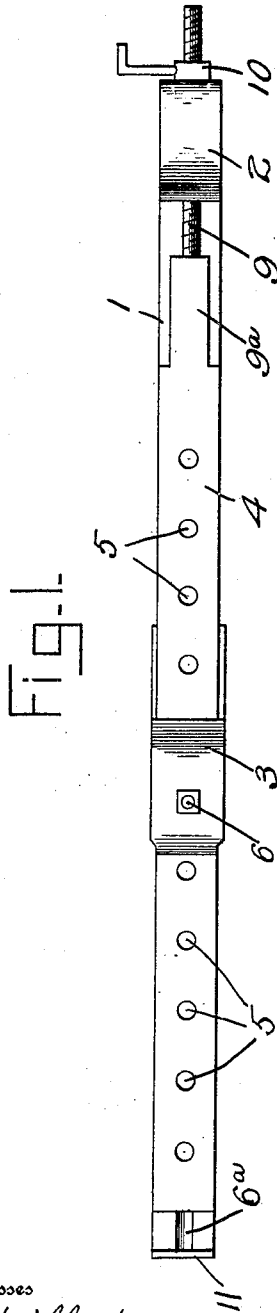


Fig. 1.

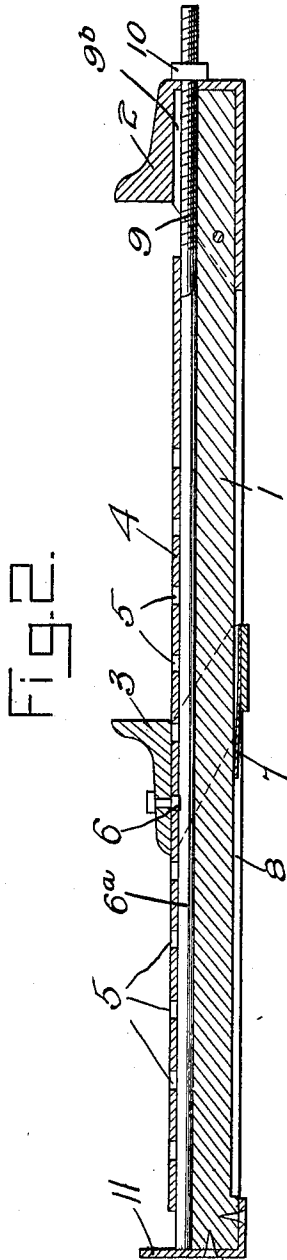


Fig. 2.

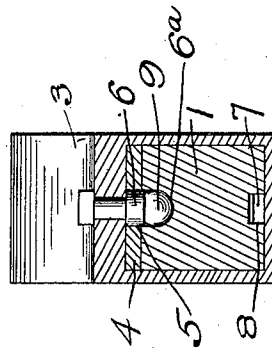


Fig. 3.

Witnesses

J. H. Miller.
M. E. Kelly.

Inventor

C. Stout,

By

D. Swift & Co.

Attorneys

UNITED STATES PATENT OFFICE.

CORNELIUS STOUT, OF POMONA, CALIFORNIA.

COMBINED CLAMP AND STRETCHER.

No. 926,030.

Specification of Letters Patent.

Patented June 22, 1909.

Application filed July 15, 1908. Serial No. 443,673.

To all whom it may concern:

Be it known that I, CORNELIUS STOUT, a citizen of the United States, residing at Pomona, in the county of Los Angeles and State of California, have invented a new and useful Combined Clamp and Stretcher; and I do hereby declare the following to be a full, clear, and exact description of the invention, such as will enable others skilled in the art to which it appertains to make and use the same.

The invention relates to a combined stretcher and clamp and has for its object to provide a simple, efficient, durable and inexpensive device of this character adapted to be used by carpenters and cabinet makers for clamping an object and stretching another object simultaneously.

Another object of the invention is to provide a device of this character which can be used separately as a clamp and also as a stretcher.

With these and other objects in view the invention consists in the novel combination and arrangement of parts hereinafter described and shown and particularly pointed out in the appended claim.

In the drawings Figure 1 is a plan view of my invention. Fig. 2 is a longitudinal sectional view through the same. Fig. 3 is a vertical sectional view.

Referring to the drawings, 1 designates the base or body of my clamp which is provided with a rigid jaw 2, fastened thereon by a transversely extending pin and a movable jaw 3 which is sleeved on said base or body portion and which constitute the clamp proper. On the upper face of the device is mounted a plate 4 having perforations 5, which perforations are engaged by a downwardly projecting lug 6 which is mounted in the jaw 3 and which holds said jaw at the desired adjustment, as will be clearly understood. The lug 6 is held against accidental release by means of the spring 7 which is mounted on the lower portion of the jaw 3 and which

operates in a groove 8 on the under side of the member 1. One end of the bar 4 is connected with a screw-threaded rod 9 which passes through the rigid jaw 2 and is also adjusted by a screw-threaded nut 10. The other end of the member 1 is provided with an L-shaped post 11 which is secured to the member in any desired manner, and it will be seen that a loop can be placed over this post and removable jaw 3 and by rotating the nut 10 in the proper direction the loop can be stretched to the desired tension.

When it is desired to use the device as a clamp, the object to be compressed is placed between the jaws 2 and 3 and the nut 10 is rotated to bring the two jaws together, as will be clearly understood.

It will be seen that my invention is simple, efficient and durable and that it can be used as a wire stretcher, a loop stretcher and the like purposes and also as a clamp, or both together.

What I claim is:—

In a clamping device, a base, a perforated plate mounted on the base, a movable jaw sleeved on the base and plate, a threaded rod fastened to the perforated plate for moving the movable jaw and the perforated plate, a rigid jaw secured on the base and having an opening therein through which the threaded rod extends, a nut on said threaded rod adapted to engage with the rigid jaw, a lug for adjustably connecting the movable jaw to the perforated plate, a spring on the under side of the movable jaw adapted to hold the lug in place on the perforated plate, and a plate fastened to the base for holding materials to be stretched.

In testimony whereof I have signed my name to this specification in the presence of two subscribing witnesses.

CORNELIUS STOUT.

Witnesses:

J. R. GARTHSIDE,
E. H. WELCH.